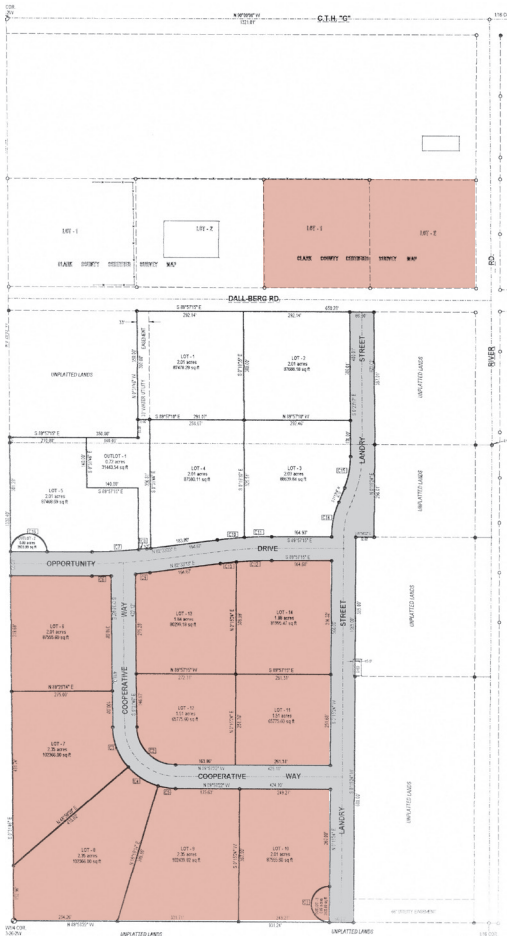


Greenwood, WI -- CECO Industrial Park



Site Specifications

SITE INFORMATION

Available Acres	21
	17 adjacent acres
Zoning	Commercial/Industrial

TRANSPORTATION

Nearest major highway	State Hwy 73
Distance to nearest highway	1/2 mile
Lanes	2
Nearest comm. airport	Mosinee / Eau Claire
Distance to airport	50 miles / 42 miles
Runways – over 1700'	Within 15 minutes
Rail provider	None

UTILITIES

Electricity supplier	Clark Electric Cooperative
Gas supplier	Possible
Municipal water	Yes
Municipal sewer	Yes
Stormwater	Possible

TELECOMMUNICATIONS

Fiber optics	Yes
--------------	-----

MEDICAL

Medical	Yes
- Marshfield Satellite Clinic	0 mi
- Memorial Medical Satellite Clinic	0 mi
- Memorial Medical Center	16 mi
- Marshfield Medical Center	25 mi
- National Farm Medicine Center	25 mi
- Ministry Health Care–Saint Joseph's Hospital	25 mi
- Marshfield Clinic Research Foundation	25 mi
- Aspirus Wausau Hospital	60 mi
- St. Clare's Hospital	60 mi

INCENTIVES

Multiple Local, State, and Federal funding opportunities

- NMTC Qualified
- Regional Business Fund
- WI Financing & Tax Credit Programs
- WHEDA/USDA/WBD
- TIF
- Labor training & others

TERMS

Negotiable
Land sales based on company investment and job creation

CONTACT

Sheila M. Nyberg
Executive Director
Clark County Economic Development Corporation
301 N. Main St.
P.O. Box 236
Loyal, WI 54446
Phone: 715-255-9151
Fax: 715-255-9153
sheila@clarkcountyedc.org
www.clarkcountywi.org

Timothy Stewart
Clark Electric Cooperative
P.O. Box 190
1209 Dall-Berg Road
Greenwood, WI 54437
Phone: 715-267-6188 or
1-800-272-6188
Fax: 715-267-7355