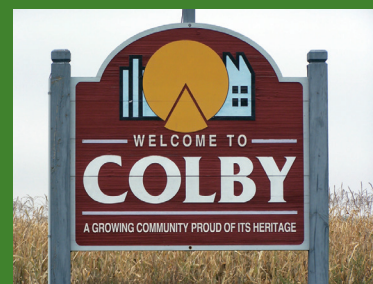
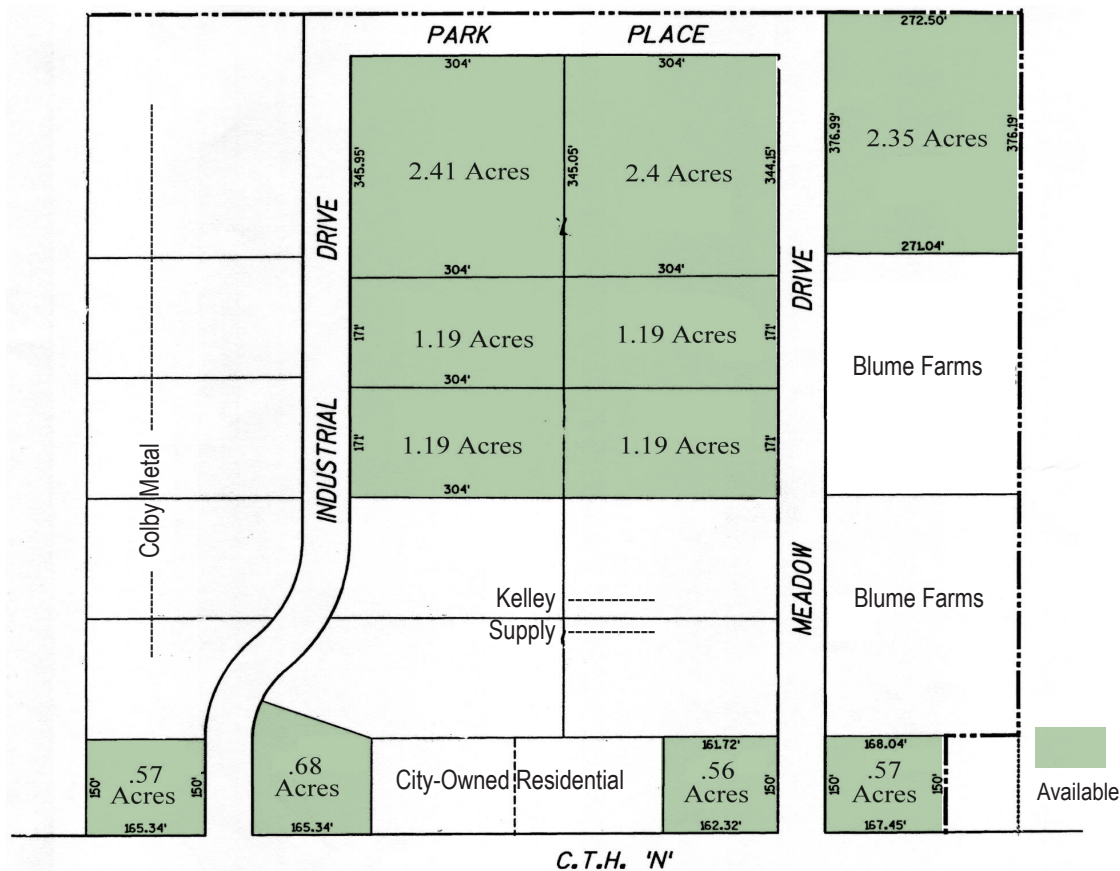


Colby, WI -- Industrial Park



SITE DESCRIPTION

The City of Colby has a number of lots available in the City's Industrial Park. The park is located at an ideal location near the intersection of State Hwy 13 and State Hwy 29. The Industrial Park is also located in a Tax Increment District and the city is able to offer cash TIF Incentives for construction in the park. The park is developed with black-topped streets and all utilities.

Site Specifications

SITE INFORMATION

Available Acres	17
Zoning	Industrial

TRANSPORTATION

Nearest major highway	State Hwy 13 / WI State Hwy 29 (Expressway)
Distance to nearest highway	Adjacent
Lanes	2 /4
Nearest comm. airport	Mosinee
Distance to airport	35 miles
Runways – over 1700'	Within 15 minutes
Rail provider	Canadian National

UTILITIES

Electricity supplier	Xcel Energy
Gas supplier	WE Energies
Municipal water	Yes
Municipal sewer	Yes
Stormwater	Yes

TELECOMMUNICATIONS

Fiber optics	Yes
--------------	-----

MEDICAL

Medical	Yes
- Marshfield Satellite Clinic	<1 mi
- Memorial Health Center	17 mi
- Marshfield Medical Center	20 mi
- National Farm Medicine Center	20 mi
- Ministry Health Care– Saint Joseph's Hospital	20 mi
- Marshfield Clinic Research Foundation	20 mi
- Aspirus Wausau Hospital	35 mi
- St. Clare's Hospital	35 mi

INCENTIVES

- Multiple Local, State, and Federal funding opportunities
 - Regional Business Fund
 - WI Financing & Tax Credit Programs
 - WHEDA/USDA/WBD
 - TIF
 - Focus on Energy
 - Labor training & others

TERMS

Negotiable
Land sales based on company investment
and job creation

CONTACT

Sheila M. Nyberg
Executive Director
Clark County Economic
Development Corporation
301 N. Main St.
P.O. Box 236
Loyal, WI 54446
Phone: 715-255-9151
Fax: 715-255-9153
sheila@clarkcountyedc.org
www.clarkcountywi.org

James Schmidt
Mayor of Colby
P.O. Box 236
Colby, WI 54421
Phone: 715-223-4435
Fax: 715-223-8835
colbych@charter.net



A growing community proud of its heritage

City of Colby

P.O. Box 236, Colby, WI 54421

www.ci.colby.wi.us

Phone: 715-223-4435

Colby, a small city in northern Clark County, was named for the Colby family who was instrumental in bringing the Wisconsin Central Railroad to the area in the 1870s. A historical marker notes the development of "Colby Cheese" by Joseph Steinwand in the 1880s. Steinwand's development stood apart from the others because it was the only natural cheese native to the United States of America.

The Clark County Historical Society has established the Rural Arts Museum in Colby. The Colby Chamber of Commerce and the Colby Future Farmers of America Alumni sponsor the annual Dairy Breakfast on a Colby area farm each June. Another annual event is Colby Cheese Days. Come and visit Colby, "Home of the Famous Colby Cheese!"

www.ci.colby.wi.us



Travel Time to Colby, WI

To and from Colby	Miles
Eau Claire, WI	68
Wausau, WI	36
Minneapolis/St. Paul, MN	153
Madison, WI	159
Green Bay, WI	129
Milwaukee, WI	221
Chicago, IL	305

