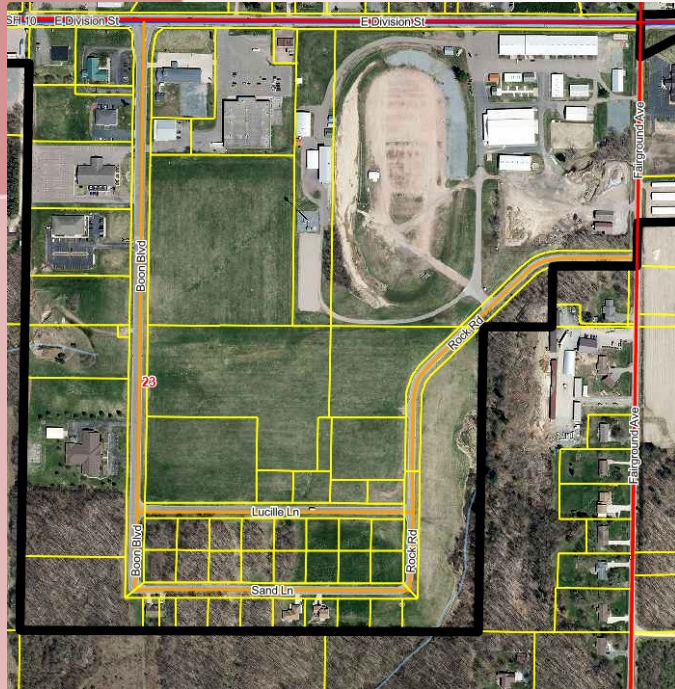




City of Neillsville, WI



BOON SUBDIVISION
BOON ADM, LLC

Residential Lots Available

The City of Neillsville currently has available:

5 - Single Family, Privately Owned Lots

25 - Single & Multi Family, Privately Owned Lots Prices range

- Residential and commercial zoned.
- All commercial lots can be broke down into lots from 1/2 acre to 10 acres or larger.
- The lots on north side of Lucille Lane are 160'x140' and on south side of Lucille Lane are 140'x140'.
- Lots both sides of Sand Lane are 140'x140'.
- Blacktopped streets with curb and gutter.
- Sewer & water, electric, phone and natural gas.

The City of Neillsville

106 W. Division St, (State Hwy 10), Neillsville, WI 54456

715-743-2105; clerk@neillsville-wi.com