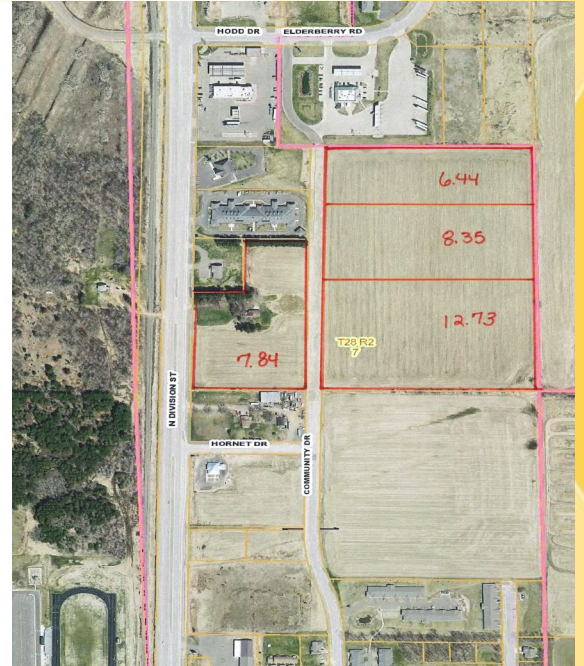




# Residential Lots Available



**Colby currently has available:**

**7 - Single Family Privately Owned Lots**

**27.5 Acres available for development – divided into 3 parcels**



**The City of Colby**

211 W Spence Street, P.O. Box 236, Colby WI 54421

715-223-4435 [clerk@cityofcolby.org](mailto:clerk@cityofcolby.org)