



2026 Newsletter

BUILDING & GROWING...FOR TODAY AND THE NEXT GENERATION



Midway Steel, Withee

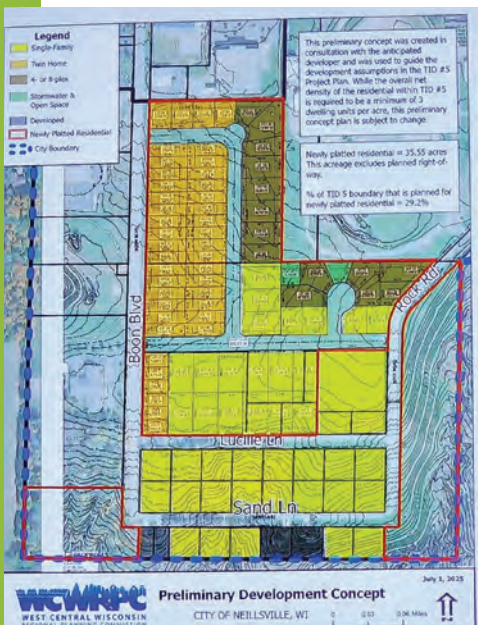


Cloverdale Country Store, Abbotsford



Grassland Dairy, Greenwood

ACCELERATED HOUSING GROWTH AND PLANNING



NEED A NEW HOME?

New Spec Homes coming soon in Abbotsford, Loyal & Owen

LOTS AVAILABLE IN CLARK COUNTY STARTING AT \$1

- Pick your site.
- Connect to Solutions for affordable homes
- Contact your Banker.
- Build your home!

Lots Available

Through "Solutions for Affordable Homes" you can get a single wide HUD Built duplex all the way up to a 3 bed, 2 bath Cross-Mod manufactured home with attached 2 car garage and porch.

OVER 150 ADDITIONAL LOTS AVAILABLE.

- Abbotsford
- Colby
- Granton
- Loyal
- Neillville
- Owen
- Thorp
- Withee

Tim Lima
Solutions for Affordable Homes
715-579-4508, solutionsforaffordablehomes@gmail.com

Clark County Economic Development & Tourism Bureau
201 N Main St, PO BOX 236, Loyal, WI, 54446
715-255-9100
info@clarkcountywisc.gov

For more information:
www.clarkcountywisc.gov

Clark County, WI EMPLOYMENT OPPORTUNITIES

2025

JOB CATEGORY OPENINGS

| JOB CATEGORY OPENINGS | NOW |
|--|------------|
| CNA, LPN, RN, Clinical Therapist, Surgical Tech, Radiology Tech, Dietary, Nutrition Coordinator, Caregivers, Hygienists, Patient Access Rep, Health Information Management | 88 |
| Teacher, Teaching Assistant, Substitute Teacher, Computer Aides, Food Service, Coaches, Childcare | 82 |
| Accounting, Office Staff, Office Managers, IT | 17 |
| Manufacturing Management, Supervisors, Supply Chain Recruiter, Plant Managers, Production Operator Supervisors, Safety Manager | 6 |
| Welders, Maintenance, Plumbers, Hydraulic Specialists | 22 |
| Social Worker, Rehab Supervisor, Psychological Assistant, Recreation Leader | 9 |
| General Labor, Assembly, Auxiliary, Environmental Services | 322 |
| Forklift Operator, Machine Operator, Maintenance Service Tech, Biotech Tech | 59 |
| Masons, Concrete, Material Handlers, Painters, Construction Workers, Electricians | 11 |
| Quality Assurance Supervisors, Inventory Audit Specialist, Shipping/Receiving | 10 |
| Purchasing, Sales & Service | 10 |
| Electromechanical Technician, CAD Drafters, CNC Programmer, Design Engineer, CNC Machinist, Tool & Die Maker, Quality Tech | 12 |
| Production Operators, Sanitation, Janitor Operator | 10 |
| Bus Drivers, Driver CDL Required, OTR, Van Drivers | 76 |
| Park Specialist, Seasonal Workers, Campground Managers | 15 |
| Sales Reps | 10 |
| Custodian, Housekeeping | 12 |
| Police Officers, Patrol Deputy, Corrections, Security, Probation & Parole Agents | 41 |
| TOTAL | 802 |

EMPLOYERS WITH CURRENT JOB OPENINGS INCLUDE:

| Clark County | Mayville |
|------------------------------------|------------------------------------|
| Abbotson School District | Mayville Engineering Co. (MEC) |
| Ashland Foods, Inc. | Mayville Manufacturing Corporation |
| Billy York, Inc. | Mid County Homes |
| CCEDC | Northside Retirement Community |
| Clark County Forestry & Parks | Northside Director |
| Clark County Growth & Highway Dept | Northside Health & Rehab |
| Clark County Rehab & Living | DEM Fabricators |
| Clark County Senior Center | School District of Granton |
| Clark County Veterans | School District of Loyal |
| Clark County Veterans | School District of Neillville |
| Clark County Veterans | School District of Thorp |
| Clark County Veterans | Thorp Equipment |
| Clark County Veterans | Vista Plus Transport |
| Clark County Veterans | Withee Health |
| Clark County Veterans | Withee Manufacturing, LLC |
| Clark County Veterans | Withee Families |

WHERE DOES LABOR LIVE?

THANK YOU: We extend our appreciation to everyone involved in investing in and helping build a better Clark County & adding to our quality of life



AGRICULTURAL GROWTH



MEET OUR BOARD, STAFF & COMMITTEES



CELEBRATING INVESTMENT IN CLARK COUNTY & ITS COMMUNITIES!

We were honored to assist with and share in ceremonies for numerous ground breakings, ribbon cuttings, grand openings & existing business expansions.

WELCOME & CONGRATULATIONS!



Derrico's & Midwest Logistics, Colby



100th Centennial, Owen



Christie Country Quilts, Greenwood



Chili Service, Chili



East Valley Veterinary Clinic, Neillsville



Fox Hollow Café & Shoppe, Dorchester



Granton Inn, Granton



Highway G Bridge, Greenwood



Hornet Nutrition, Colby



Loyal Tire & Repair, Loyal



Neillsville Market Place, Neillsville



OK Corral, Colby



Sliding-T-Acres Airbnb, Neillsville



**Abbotsford Middle & High School,
Abbotsford**



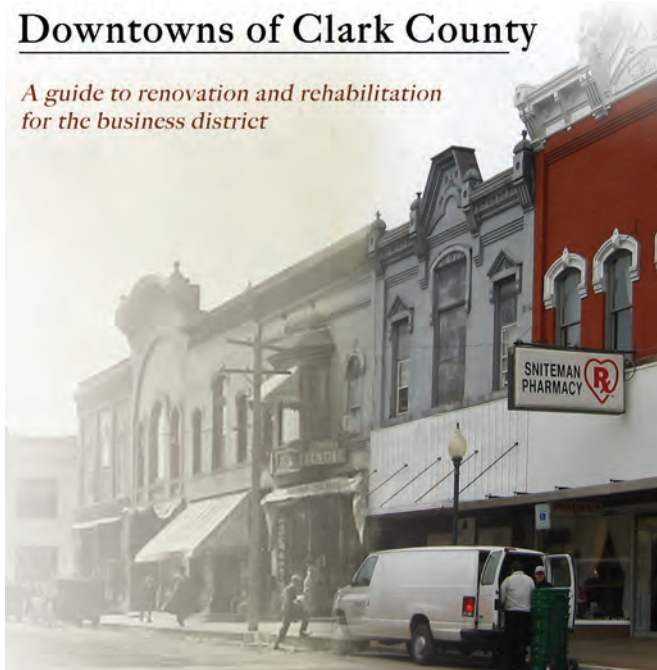
Different Ministry Stage, Willard



Gross Motors, Neillsville

Downtowns of Clark County

*A guide to renovation and rehabilitation
for the business district*



REGIONAL BUSINESS FUND, INC.

RBF, Inc. is a non-profit economic development corporation whose purpose is to promote business and economic development in West Central Wisconsin.

RBF, Inc. offers low-interest loan funds to businesses that expand within the region; diversify the economy; add new technology; revitalize buildings in the region's downtowns; create or retain quality jobs; and leverage private capital investment in the region.

PROGRAMS

REVOLVING LOAN FUND
GROWTH LOAN FUND
MICRO LOAN FUND

www.rbfinc.org/

FACADE LOAN FUND
TECHNOLOGY ENTERPRISE FUND
EDA REVOLVING LOAN FUND



Please reach out to us at sbdc@uwec.edu if you would like assistance with your business.

NEED HELP WITH BUSINESS PLANNING?

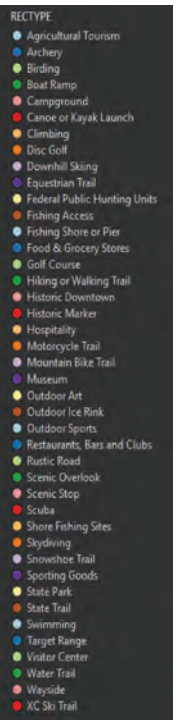
For information on gap financing, packages for startups, or business expansions, ribbon cutting ceremonies, contact: Sheila Nyberg, Executive Director, Clark County Economic Development Corporation & Tourism Bureau sheila@clarkcountyedc.org or call 715-255-9151

COMMITTEES WE WORK WITH



The Clark County Community Foundation, Inc. is dedicated to benefiting citizens and communities of Clark County. For more information and to get involved: www.clarkccf.org or 715-937-6167

USDA-RPN OUTDOOR RECREATION PLANNING & MARKETING



TOURISM & MARKETING: Bragging about our county



Wedges Creek Hideaway, Greenwood



Just Another Music Monday, Colby

**MUSIC VENUES
FOR EVERYONE
TO ENJOY**

TRAILS & SAFE ROUTES TO SCHOOL INCREASING

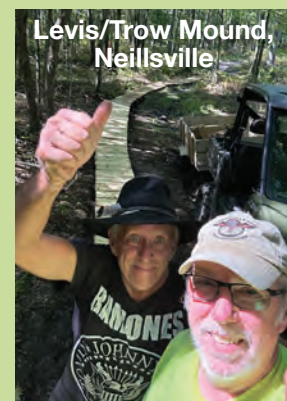
Bike and walking, trails and safe routes to school trails are increasing in many of our towns.



Central Wisconsin Safe Routes to School (SRTS) programs are being developed and implemented through regional planning commissions to make walking and biking safer for students.



O'Neill Creek Trail, Neillsville



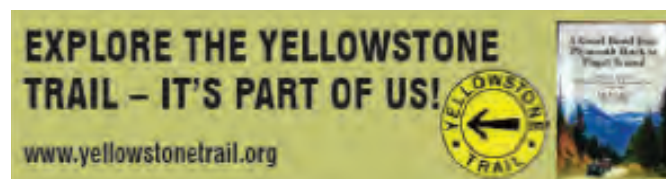
ENHANCING QUALITY OF LIFE THROUGH MARKETING



Community Marketing



Lots Available



LOCALS LOVE IT...VISITORS DO TOO!

TOURING THROUGH CLARK COUNTY – RELAX & ENJOY



RICH HISTORY OF AGRICULTURE & ENTREPRENEURSHIP

Many award-winning products come from Clark County



BUSINESS TO BUSINESS EXPO & CAREER FAIR – Get Involved!

Mark your calendars for May 6, 2026. The event will again be hosted by CCEDC & TB at Clark Electric Cooperative Headquarters in Greenwood, WI. All businesses from our county/communities are invited. Call or email us to get your space! Registration and sponsorship are happening right now!!



CLARK COUNTY WORKFORCE COUNCIL

Business & Education Partnerships

Making major inroads to Internships and Co-ops, Registered Apprenticeships and Youth Apprenticeships thru Business and Education partners – is extremely crucial for Clark County! Our opportunities lie in working with CESA

10, our 3 Technical Colleges in Clark, the UW System including - Stout and River Falls and others in our region. The sky is the limit to help our k-12 schools here become engaged in mentorships.

“Comprehensive planning is our community’s roadmap for the future — a shared vision that balances growth, sustainability, and quality of life.”



STRATEGIC PLANNING FOR CLARK COUNTY SCHOOLS

Vision & Mission Statements • Core Values • Strategic Goals

STUDENTS HEAVILY INVOLVED IN THE COMMUNITY



CLARK COUNTY ECONOMIC DEVELOPMENT CORP & TOURISM BUREAU

301 N Main St, PO Box 236 | Loyal, WI 54446 | Phone: 715-255-9100

www.clarkcountyywi.org | info@clarkcountyedc.org | facebook.com/clarkcountyywitourism

Don't miss any news or information. Watch for our monthly E-Newsletter. Contact us to sign up or for other information.

We use email blasts to keep important info flowing to you! Send us your email to be added.