

# Village of Granton

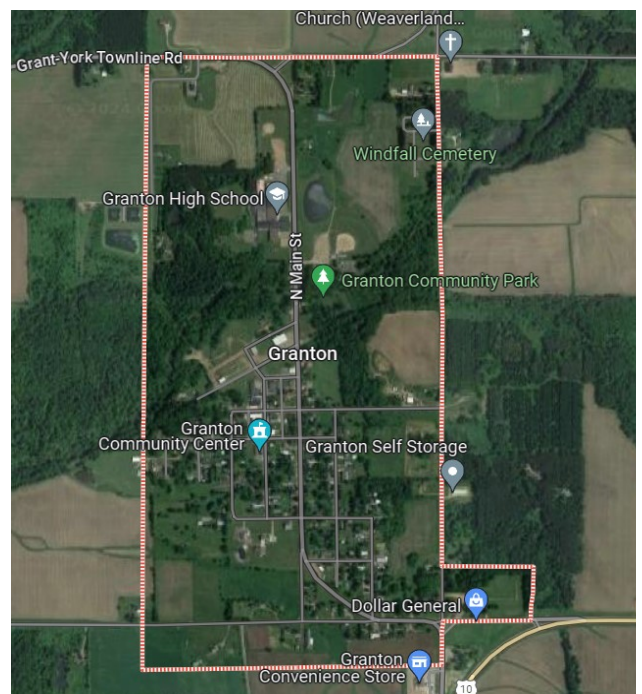
*"A Little Town Doing Big Things"*



*One of Clark Counties little gems, that has everything you need and all the charms to make you fall in love and want to stay!*

**The Village of Granton rests among long stretches of rich farmland and is nestled along the banks of O'Neill Creek. This buzzing little community sits along U.S. Hwy 10 just west of Neillsville.**

For a small town, Granton is one big place. Within the village limits, is a bank, Dollar General, hardware store, Lutheran Church, restaurant, pubs, post office, metal crafter, community center, vet clinic, K-12 school, ball park, tennis & volleyball courts, walking trails, campground with 14 electrical sites, fishing pond stocked each year with trout, library and a daycare center.



**Just outside the Village limits find supper clubs, a gas station, several tractor and farm supply companies, cheese makers, and a large Amish community with many greenhouses and roadside stands.**



## **Granton Clerk:**

210 Maple Street Box 69, Granton, WI 54436  
715-937-7325, [clerk@vi.granton.wi.gov](mailto:clerk@vi.granton.wi.gov)

# Granton Businesses



**Granton Community Park**

## Businesses in the heart of Granton

Badger Animal Care  
Citizen State Bank  
Community Center  
Dollar General  
Fades and Foils Hair Studio  
Granton Community Library  
Granton Hardware  
Granton Area Fire Department  
Granton Inn  
Granton Municipal Office  
Granton Post Office  
Granton Village Hall & Garage  
Grassland Veterinary Clinic  
The Burrow Senior Living Center  
The Office Bar & Grill

## Nearby Community Businesses

Bethany's Shear Perfection Hair Salon/Tanning  
Campground with 14 electrical sites  
Frick Inn Bar & Grill  
Granton Community Child Care Center  
Granton Community Park & Fishing Pond  
Granton Convenience Store  
Granton K-12 School  
Granton Walking Trails  
Hilltop Bar & Grill  
Kuhl Implement  
LL Greenhouse  
Lynn Dairy & Lynn Dairy Proteins  
Mapleworks Apartments  
Roadhouse Bar & Grill  
Tennis & Volleyball Courts  
The Maple Dude  
Tractor Central  
Turn Pike Greenhouse  
Zion Evangelical Lutheran Church



*Granton has just the friendly, compact living experience you've been looking for!*

**Clark County Economic Development & Tourism Bureau**

301 N Main St, PO Box 236, Loyal, WI 54446

715-255-9100, [nfo@clarkcountyedc.org](mailto:nfo@clarkcountyedc.org), [www.clarkcountywi.org](http://www.clarkcountywi.org)

