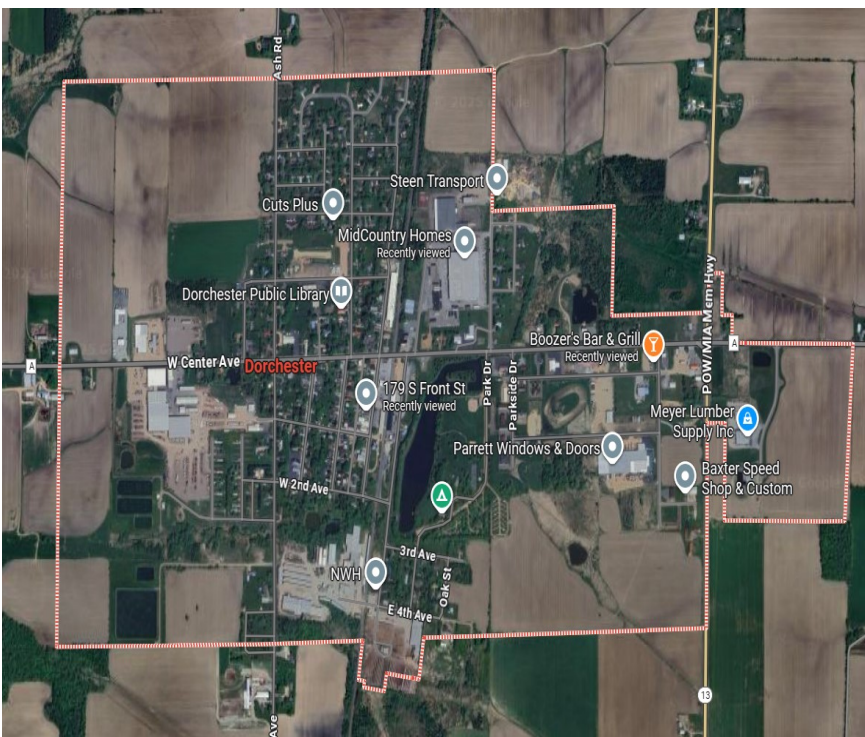


# VILLAGE of DORCHESTER



The Village of Dorchester is located in Clark & Marathon Counties in beautiful central Wisconsin. With a population of just 875, Dorchester is a quintessential small town -- but one which offers easy access to an abundance of amenities and opportunities found in larger cities!

Come spend the summer camping and fishing in our 43-acre park, or enjoy the hundreds of miles of snowmobile trails in the winter.



Our Village crosses Highway 13, and is just minutes from State Highway 29, which provides easy commuting to Wausau, Marshfield, Medford, and Eau Claire.

**“You'll be proud to call Dorchester, Wisconsin, your home.”**

**Dorchester Clerk:**  
250 Parkside Drive, Dorchester, WI 54425  
715-654-5006, [dvcval@tds.net](mailto:dvcval@tds.net), [www.dorchesterwi.com](http://www.dorchesterwi.com)





# Dorchester Businesses

## Manufacturing/Sales/Service

Bob's Dairy Supply Inc  
 Bruteforce Mfg.  
 Burnett Transit  
 Cavco Dorchester  
 Countyline Auto  
 High Precision Grinding Corp  
 Interior Cleaning Specialists  
 Marathon Cheese Corp  
 Mengel Industrial Airless Painting  
 Meyer Buildings Inc  
 Meyer Manufacturing Corp  
 NWH Products  
 Parrett Windows & Doors  
 RJ Stockwell Inc  
 Schilling Auto Sales & Salvage  
 Staab Manufacturing  
 Steen Construction  
 Steen Transport  
 Steen's Wisco Stone  
 Viken Small Engine LLC  
 Westar Mfg Corp

## Shopping

Badger Arms Depot  
 Creative Hideaway  
 Fox Hollow Café' & Shoppe  
 Meyer Lumber Supply Inc  
 Pac Knives Sales, LLC  
 Pinter's Packing Plant Inc  
 River Country Gas/Convenience Store  
 Steeple Gallery & Creative Center

## Salons

Cuts Plus  
 Salon Twenty 2  
 Turning Heads Salon

## Banks/Financial

Forward Bank  
 Forward Insurance

## Churches

Cornerstone Chapel  
 Iglesia Cristiana  
 St Louis Catholic Church  
 St Peter Evangelical Lutheran



## Pubs & Eateries

Boozer's Bar & Grill  
 Fox Hollow Café' & Shoppe  
 Frickin A Bar  
 Point 08 Bar & Grill

## Retirement:

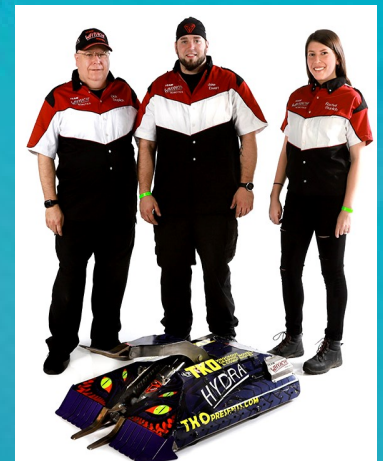
Dorchester Housing Corp  
 The Homeplace of Dorchester



## Additional Business

Archery America LLC  
 Baxter's Speed Shop  
 Dorchester EMS  
 Dorchester Library  
 Dorchester Memorial Hall  
 Dorchester Park Campground  
 Molitor Transport LLC  
 Peissig Bro Car Wash  
 Randy's Body Shop  
 River Country Co-Op  
 Stro's Plumbing

Home of the  
 "Hydra Battle Bots"



**Clark County Economic Development & Tourism Bureau**

301 N Main St, PO Box 236, Loyal, WI 54446

715-255-9100, [info@clarkcountyedc.org](mailto:info@clarkcountyedc.org), [www.clarkcountywi.org](http://www.clarkcountywi.org)