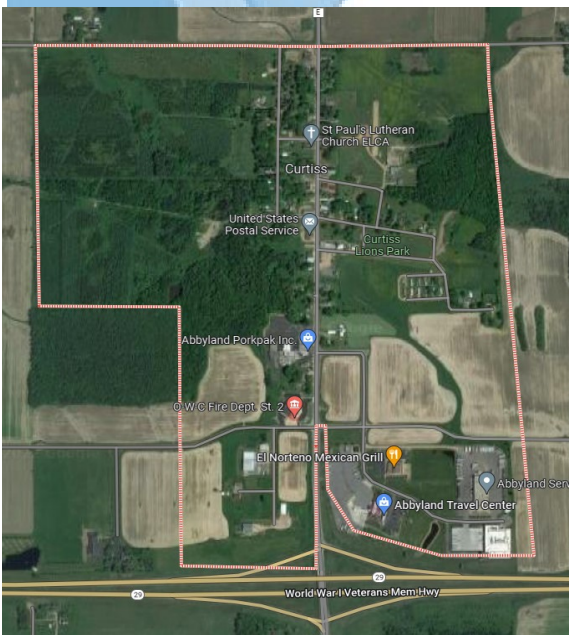




Curtiss is located on the Yellowstone Trail. Conveniently located half way between Wausau and Eau Claire along State Highway 29. The Village has a population of around 350 residents. We may be small, but we have business, industry and much to offer in our area.



The Village of Curtiss has a village community center (formerly the Curtiss School, built in 1910), Curtiss Memorial Park and Village park which has a shelter with kitchen, modern facilities and a playground.

There are many recreational opportunities within a short distance of Curtiss, in Clark, Taylor & Marathon Counties. Curtiss is also located right on some of Wisconsin's well groomed snowmobile trails, with easy access to hundreds of miles of trails.

Curtiss is home to numerous small businesses as well as a large processing facility, Mexican restaurant & banquet hall and a 24 hour truck stop & restaurant.



Curtiss Clerk:

915 Meridian St, P.O. Box 97, Curtiss, WI

Ph: 715-223-6226, curtissclerk@gmail.com, www.villageofcurtiss.org



Curtiss Businesses

Curtiss has the friendly living experience your looking for!

Businesses in the heart of Curtiss:

- Abbyland Family Restaurant
- Abbyland Porkpak Inc
- Abbyland Service Center & Truck Wash
- Abbyland Truck Stop/ C- Store
- Boomtown Storage
- Curtiss Alliance Church
- El Norteno Banquet Center
- Exit 127 Storage
- Midwest Sidewalls, LLC
- Real Fence LLC
- St Paul's Lutheran Church- ELCA
- Walnut Creek Foods



Nearby Community Businesses:

- Brubaker Ag Equipment LLC
- Bruce Mound Builders LLC
- Cloverdale Equipment LLC
- Coffee Creations Shop & Bakery
- Country Fresh Produce
- Dales Quality Spray Painting & Whitewashing
- Derrico Logistics LLC
- Double L Greenhouse
- Hoover Hydraulics
- Hoover Metals
- Maki Welding Services LLC
- Nasonville Dairy Cheese Store
- Oak Grove Custom Kitchen
- Popple River Hydraulics
- Rainbow Reflections Discount Groceries
- Schindler Auctions
- Sensenig Construction
- Zimtech Directional Boring



Clark County Economic Development & Tourism Bureau

301 N Main St., P.O. Box 236, Loyal, WI 54446

715-255-9100, info@clarkcountyedc.org, www.clarkcountywi.org