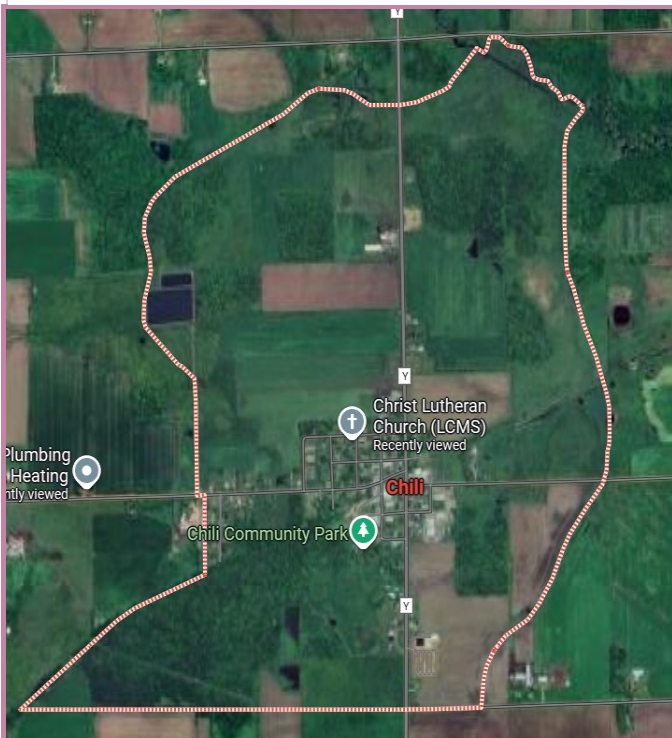


Town of Fremont - Chili, WI



“Chili provides its residents with a rural ambiance, complemented by a close-knit community vibe!”



The town of Fremont, Wisconsin, was settled with the arrival of the Chicago and North Western Railway in the 1880s, leading to the development of sawmills and the eventual establishment of the hamlet of Chili. Chili's name origin is debated, with a story crediting its cold winter conditions during a railroad official's visit in 1881 as the inspiration, while another suggests it was named after the country of Chile. The area's economy shifted from logging to agriculture, which remains its primary focus today.

The Town of Fremont is located west of Marshfield, WI.

The area is home to many local dairy producers, several business establishments and the Chili Fremont Fire & Rescue



Town of Fremont - Chili

N5671 Oak Street, P.O. Box 96, Chili, WI 54420
715-683-2678, fremontclerk@gmail.com, www.townoffremont.com



Chili/Fremont Businesses

"Rooted in History, Growing for Tomorrow"

Businesses in the heart of Chili

Arlene Stichert Community Center
Central Mechanical Systems Inc.
Chili-Fremont Fire & Rescue
Chili Post Office
Chili Service
Christ Lutheran Church
DFA Ingredients Solutions
Fremont Town Garage
Immanuel United Methodist Church
Lil Todd's Garage
Selk Electronics Inc
Stichert Law Office
Stichert Roofing & Lumber Company



Nearby Community Businesses:

Canfield's Plumbing & Heating
Chili Corners Club
Chili Implement Co.
Fairview Produce & Greenhouse
Esselman Fence & Deck
G.T. Roofing
Katie's K9 Kutz
Katie's Kandy Kitchen
Maple Lane Greenhouse
Our Fathers House
Pettit Family Syrup
Sunrise Nutrition Feeds & More



Clark County Economic Development & Tourism Bureau

301 N Main St., P.O. Box 236, Loyal, WI 54446

715-255-9100, info@clarkcountyedc.org, www.clarkcountywi.org