

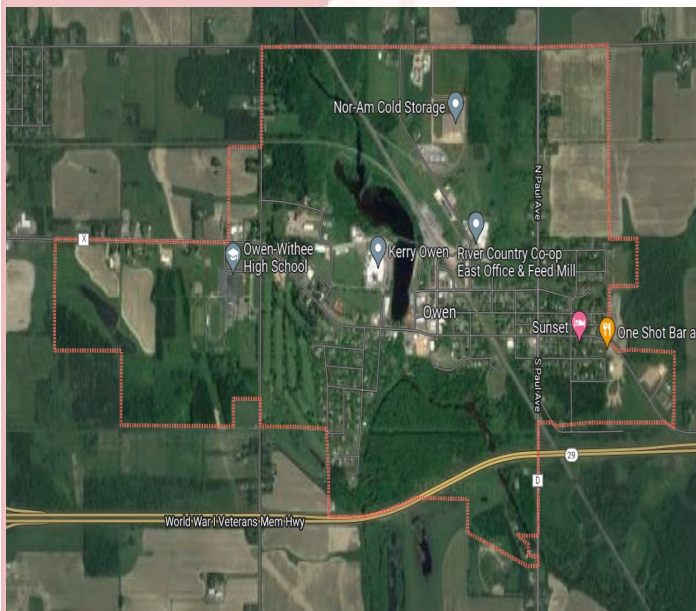


## CITY OF OWEN

Clark County, Wisconsin

**“Small town charm with a friendly atmosphere”**

*The City of Owen was founded by the lumber baron, John S. Owen, in 1883, and was incorporated in 1904. One of the most historical buildings remaining in our community is the Old Woodland Hotel on Main Street built by the Owen Lumber Company in the early 1900s. The historical Carriage House, along with the gymnasium, are being refurbished.*



In Owen, enjoy a nature walk in the majestic forests along the Popple River, a picnic at the Owen Park, watching the sunset from the High Bridge or camp at Crowley Park. Owen offers a paved bike trail, for roller-bladers, bike riders and walkers. Winter offers many ski and snowmobile trails and sledding down Tennis Shoe Hill. Hunters and fisherman will benefit from the woodlands and many lakes and streams in the area. Owen also offers a beautiful nine-hole golf course. It be a small town in size, but offers large opportunities with a friendly atmosphere, where there are no strangers, only smiles and genuine concern for each other.

The City of Owen is located on Highway 29 in the heart of central Wisconsin. We love our quality of life and there are so many outdoor things to do. Golfing, camping, fishing and much more!

**Owen Clerk**

833 W. 3rd Street, PO Box 67, Owen, WI 54460  
(715) 229-2404, [owenclerk@cityofowen.com](mailto:owenclerk@cityofowen.com), [www.cityofowen.com](http://www.cityofowen.com)



# Businesses in Owen

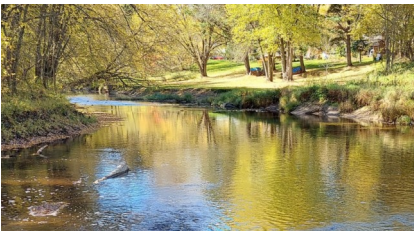


## **Shopping**

Cosmic Vapes LLC  
Country Hardware  
Dollar General  
Finishing Touches Upholstery  
Martin's Fresh Market  
O-W Sports & Liquor Store  
Pike Office Supply

## **Education/Childcare**

Wild Hearts Daycare  
Owen-Withee School District



## **Government**

City Hall  
Owen Library  
Owen Community Center  
O-W Police Department  
Owen/Withee/Curtiss Fire Dept.

## **Healthcare/Services/Dental**

Aspirus Owen Clinic  
Clark County Rehab & Living  
Clark County VA Clinic  
Living Well Mental Health Clinic  
Owen Family Dental Center  
Revive Chiropractic

## **Greenhouses**

En-Ve Acres  
Posy Patch Greenhouse & Gifts

## **Manufacturing/Sales/Services**

AJ Hollander  
Badger Precision Inc  
Bogseth Bussing  
D-7 Solutions LLC  
Elbow River Marketing (Propane)  
Grandpa Earls Pretzels  
Green Grove Supply, LLC  
Hanson Masonry & Concrete  
Hoover Silo  
Kerry Ingredients  
Maki Heating & Cooling  
Master Package  
Metal Wholesale  
NorAm Cold Storage  
Quality Roasting  
River Country Co-Op

## **Pubs & Eateries**

Cozy Corner Café  
El' Pinal  
Last ACE Bar  
Mauel's Ice Cream  
Meadowview Golf Course/Restaurant  
One Shot Bar & Grill  
Reddaisygirl  
The Woodland Tap Room

## **Churches**

Holy Rosary Catholic  
St Katherine's Episcopal  
United Church Of Christ

## **Convenience Stores/Auto**

Creekside Convenience Store  
Hargot's Restoration  
Napa Auto Parts

## **Finance/Bank/Law**

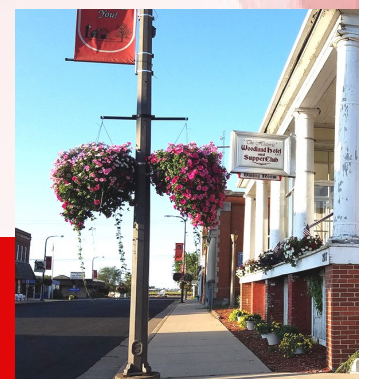
Kim Nelson Tax Accountant  
Mary Ellen Hughes Law  
Prevail Bank  
Socwell Schindler & Associates  
Standke Financial Services  
Wordan-Wachsmith Law

## **Salons**

Jen's Hair Salon & Tanning  
Kelly's Unique Hair

## **Additional Businesses**

Cruise Planners  
Dairyland Animal Clinic SC  
Enterprise Sentinel & Rural News  
H&A Towing and Recovery LLC  
Lake & Land Rec (Trailers)  
Masonic Lodge  
Maurina-Schilling Funeral Homes  
OW Vets Club  
Straight Line Investments  
Sunset Motel



**Clark County Economic Development & Tourism Bureau**

301 N Main St, PO Box 236, Loyal, WI 54446

715-255-9100, [info@clarkcountyedc.org](mailto:info@clarkcountyedc.org), [www.clarkcountywi.org](http://www.clarkcountywi.org)