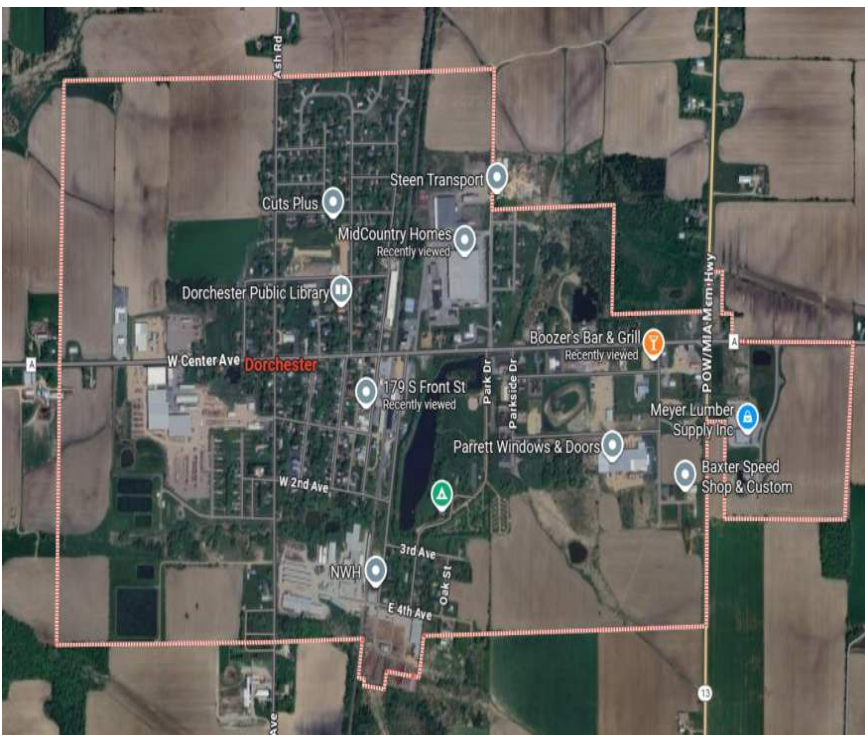


VILLAGE of DORCHESTER



The Village of Dorchester is located in Clark & Marathon Counties in beautiful central Wisconsin. With a population of just 875, Dorchester is a quintessential small town -- but one which offers easy access to an abundance of amenities and opportunities found in larger cities!

Come spend the summer camping and fishing in our 43-acre park, or enjoy the hundreds of miles of snowmobile trails in the winter.



Our Village crosses Highway 13, and is just minutes from State Highway 29, which provides easy commuting to Wausau, Marshfield, Medford, and Eau Claire.

"You'll be proud to call Dorchester, Wisconsin, your home."

Dorchester Clerk:
250 Parkside Drive, Dorchester, WI 54425
715-654-5006, dvcval@tds.net, www.dorchesterwi.com





Businesses in Dorchester

Shopping

Badger Arms Depot
Creative Hideaway
Fox Hollow Café & Shoppe
Meyer Lumber Supply Inc
Pac Knives Sales, LLC
Pinter's Packing Plant Inc
River Country Gas/Convivence Store
Steeple Gallery & Creative Center

Churches

Cornerstone Chapel
Iglesia Cristiana
St Louis Catholic Church
St Peter Evangelical Lutheran

Pubs & Eateries

Boozer's Bar & Grill
Fox Hollow Café & Shoppe
Frickin A Bar
Fuzzy's Bar & Grill
Point 08 Bar & Grill

Retirement:

Dorchester Housing Corp
The Homeplace of Dorchester



Salons

Cuts Plus
Salon Twenty 2
Turning Heads Salon

Banks/Financial

Forward Bank
Forward Insurance



Additional Business

Archery America LLC
Dorchester EMS
Dorchester Library
Dorchester Memorial Hall
Dorchester Park Campground
Peissig Bro Car Wash
Randy's Body Shop
River Country Co-Op
Stro's Plumbing

Manufacturing/Sales/Service

Bob's Dairy Supply Inc
Burnett Transit
Cavco Dorchester
Countyline Auto
High Precision Grinding Corp
Interior Cleaning Specialists
Marathon Cheese Corp
Mengel Industrial Airless Painting
Meyer Buildings Inc
Meyer Manufacturing Corp
NWH Products
Parrett Windows & Doors
RJ Stockwell Inc
Schilling Auto Sales & Salvage
Staab Manufacturing
Steen Construction
Steen Transport
Viken Small Engine LLC
Westar Mfg Corp
Wisco Stone

Home of the
"Hydra Battle Bots"



Clark County Economic Development & Tourism Bureau

301 N Main St, PO Box 236, Loyal, WI 54446

715-255-9100, info@clarkcountyedc.org, www.clarkcountywi.org