

# Abbotsford

*Wisconsin's First City*

CITY OF ABBOTSFORD  
— MUNICIPAL CENTER —  
PUBLIC LIBRARY CITY HALL

**“A Small Community Doing Business in a Big Way . . . ”**

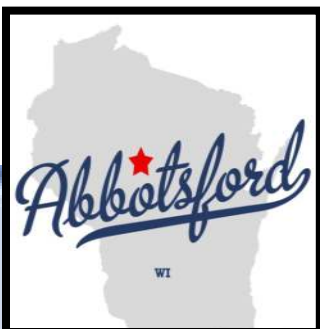
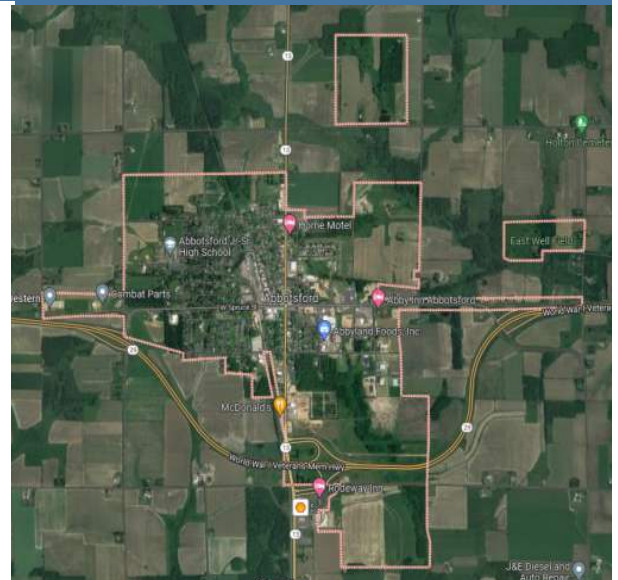
Abbotsford, at the junction of Highways 29 and 13, is home to over 160 businesses & industries which provide a wide variety of services and employment opportunities. The school district offers a well balanced curriculum with modern classrooms and technical facilities.



The city has a library, softball & baseball diamonds, parks, also an indoor swimming pool at the High School. There are numerous retail shops, restaurants and manufacturing plants along with new housing.

Abbotsford is home to the annual Christmas Parade, held since 1971, the first Sat. in December, which features costumed characters and colorfully lit floats which delights thousands of spectators who come from all over Wisconsin each year.

Another well-known attraction is the huge ice cream cone outside the Hawkeye Dairy Store.



**Abbotsford Administrator**

203 N. First Street Abbotsford, WI 54405

Phone: 715-223-3444; [info@ci.abbotsford.wi.us](mailto:info@ci.abbotsford.wi.us)



# Businesses in Abbotsford

## Shopping:

Abbotsford Appliance Center  
Abbotsford Pharmacy  
Abby County Market  
BBD Sports Shop  
Carquest Of Abbotsford  
Cloverdale Country Store  
Combat Parts, Inc.  
Dollar General  
Family Dollar/Dollar Tree  
Hawkeye Dairy Store  
JP Togs Bridal & Formal  
Maximum Autosport's & Signs  
Novedades La Chiquita - Boutique  
Prestigious Metalworks

## Food Hubs & Pubs

Abbotsford Travel Stop-Shell  
Abby Café  
Express Lane  
Fat Boy's Bar & Grill  
Jack's Cantina Bar & Grill  
Kwik Trip  
La Katrina Bar & Grill  
La Michoacana  
La Takeria El Nopal  
La Tropicana  
McDonalds  
Medo's Family Restaurant LLC  
Pizza Hut  
Taqueria El Sol 2

## Churches

3:16 Church  
Abbotsford EFC Evangelical Free  
Christ Lutheran  
First Presbyterian  
Hope Center of Central Wisconsin  
Iglesia Apostolica De La Fe  
St Bernard's Catholic

## Salons

Bombshells & Daperdudes  
Eastside Salon & Spa  
Sharkey's Snips and Clips  
Style Inn Salon  
Tangles End  
The Beginning Hair Salon

## Hotels/Motels:

Abby Inn  
Home Motel  
Rodeway Inn

## Healthcare

Abbotsford Healthcare Center  
Borealis Wellness Clinic LLC  
Doctors Care Clinic  
Engel Chiropractic LLC  
First City Dentistry  
Vita Care Living

## Manufacturing/Sales/Services

Abbyland Foods Inc  
All Metal Stamping Inc  
Ascendance Trucks  
A-Team Machine LLC  
Combat Parts Inc.  
Creative Automation Inc  
DI LLC  
Northside Machine Works  
Up North Concrete  
Witmer Industries

## Construction/Building/Electrical

Best Choice Builders LLC  
Central WI Plumbing, Heating & Electrical  
Jakel Plumbing Heating & Electrical Inc  
Melvin Companies  
Mykhail LLC/ MH Construction  
Red Barn Electric LLC  
Strek-O Doors  
Uhlig Construction

## Law

Jensen Scott Grunewald & Shiffler S.C.  
Nikolay Law Offices

## Additional Businesses

Abbotsford Public Library  
Abbotsford Sportsmen's Club  
Abby Farms Vintage Advantage  
Badger State Western Inc  
Blazel Diversified LLC  
Central Wisconsin Shopper  
Christensen Sales Corp  
Courage To Change Recovery  
D & S Milling Inc  
Henry G Meigs, Inc  
Kurt Kalepp Excavating  
Mast Farm Service  
Maurina-Schilling Funeral Home  
Northern Lakes Veterinary Supply  
River Country Co-op  
School District Of Abbotsford  
TP Printing  
Xcel Energy

## Automotive Sales/Service

Abby Ford  
Auto Wash Supplies Co.  
Cliff's Auto Service  
Decker Automotive  
Kelsey Bearing & Seal  
Kauffman Auto Services

## Insurance/Reality/Accounting

A&M Insurance Agency LLC  
American Family Insurance  
Century 21 Dairyland Realty  
Feldbruegge Insurance Agency LLC  
Greater Insurance Services  
Kaiser Insurance  
Reis & Reis Accounting

## Banks & Credit Unions

Abby Bank  
Taylor Credit Union

**Clark County Economic Development & Tourism Bureau**

301 N Main St, PO Box 236, Loyal, WI 54446

715-255-9100, [info@clarkcountyedc.org](mailto:info@clarkcountyedc.org), [www.clarkcountywi.org](http://www.clarkcountywi.org)

