



“Small town charm with a friendly atmosphere”

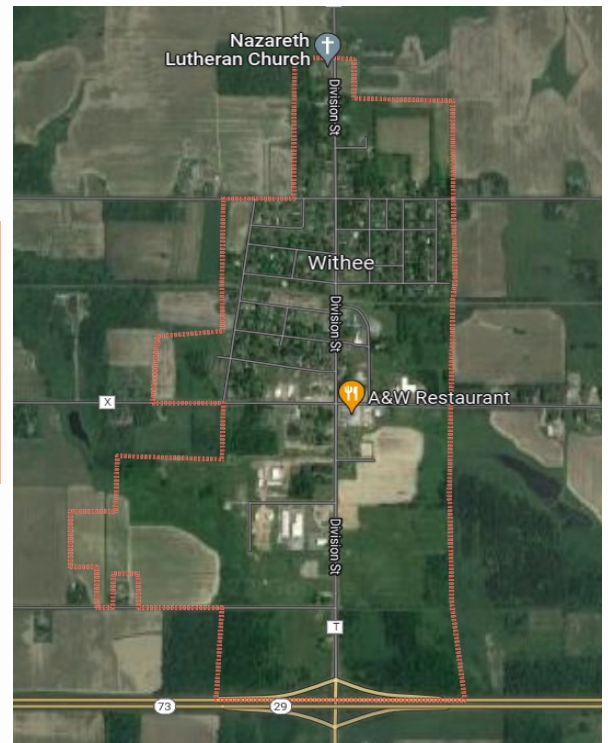
Located just off the Black River, Withee offers many opportunities for the outdoor enthusiast. The avid fisherman will find the perfect spot to fish. The North Woods offers many opportunities for those who enjoy hunting. For the active person, there is softball, biking, fishing, pickle ball courts and snowmobiling.

The Village of Withee was founded in 1870, and named after a school teacher from Maine, W.H. Withee and was incorporated as a village in 1901.

Withee offers year-round activities for everyone!

Cross-country skiing, excellent sledding hills, ice skating, snowmobiling trails, basketball, bike trails, horseshoe pits, public parks, softball, volleyball & pickleball courts. Summer recreation programs include youth softball and baseball also library programs throughout summer.

The O-W Sportsmen's Club offers indoor brush shoots to enjoy. Annual events include Withee Days, O-W Dairy Breakfast, Breakfast at the Orchard and many others.



Withee Clerk:

511 Division St, PO Box A, Withee, WI 54498-0105

(715) 229-4319

clerk@villageofwitheewi.gov, www.villageofwithee.com



Businesses in Withee area

Shopping

Black River Orchard
Brubaker Sewing & Furniture
Country View Power Tools
DJ's Metal Art
Five Star Supply
Hene Supply LLC
Munson Bridge Winery
Nolt's Upholstery
One Love Bread LLC
O-W Pharmacy
Red Rooster Herbs

Greenhouses

En-Ve Acres
Frenchtown Greenhouse
Central WI Produce Auction
Longwood Gardens
Posy Patch
Weaver's Greenhouse

Churches & Library

Community Alliance
Nazareth Lutheran ELCA
St John's Lutheran
United Methodist
Withee Public Library

Butcher Shops

Black River Meats
Martin's Meat Processing
River Valley Meats

Food Hubs & Pubs

A & W Restaurant
Chester's Chicken
I.G.Y.S. Bar & Grill
Lana's Scoops
Midway Bar
Paula's Country Diner

Salons

Graphic Hair Design
Laurie's Hair Creation

Repair Shops

Burkholder Tractor Repair
Frenchtown Repair
Hoover Silo Repair LLC
Martins Repair
RC's Welding & Fabrication
S&S Collision & Restoration
Stumpner Repair

Retirement

40 Winks Lodging
Just Like Home

Banks, Insurance, Realty

AbbyBank
Forward Bank
Forward Insurance
Woodland Realty

Contractors & Electric Co.

Area Wide Concrete & Excavating
Badger Livestock Equipment
Brubaker Construction
Baehr Electric Co.
Black River Spray Foam
Country Forest Products
Custom Concrete & Timber
Jerry's Painting & Staining
Joe's Refrigeration Inc
Jon-Mar Refrigeration
Mengel Painting
MZ Builders
Petersen Seal Coating/Power-washing
Precision Truss
R. Z Construction
Rivers Edge Metal Roofing
Shelton Painting
Slobodnik Gravel & Excavating
Snyder Exteriors
Sunset Painting
WE Energies
Wells Painting-Contractor

Additional Businesses

Buck Tales Taxidermy
Hollow Dairy Supply
Maurina Monuments
Maurina Storage Units
Midway Steel
Ogurek Trucking
Premier Livestock & Auctions LLC
Railside Enterprise
Refuel Pantry & Convenience Store
Rod & Staff Publishers
Silver Star Metals
She Shed – Reflexology
The Honey Kohn's
The Ten Cent Hole Airbnb
Tri-County Lawn & Garden
Wakefield-Vette/ Wakefield Thermal
Withee Car Wash
Withee Oil Company
Withee Toss in Wash

Clark County Economic Development & Tourism Bureau

301 N Main St, Loyal, WI 54446

715-255-9100 info@clarkcountyedc.org www.clarkcountywi.org