



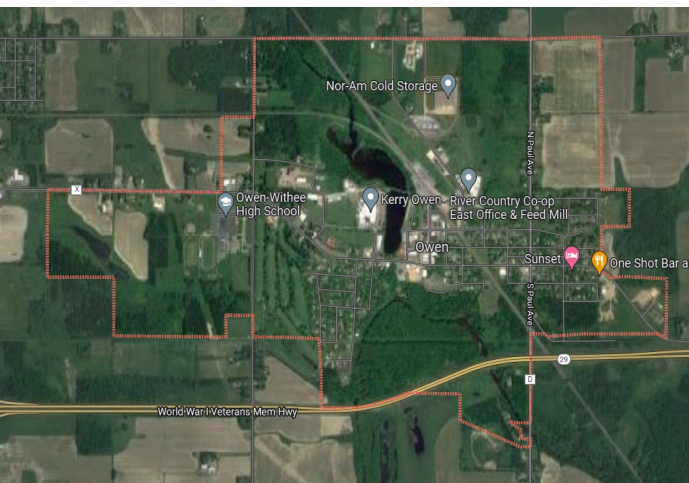
CITY OF OWEN

Clark County, Wisconsin

“Small town charm with a friendly atmosphere”

The City of Owen was founded by the lumber baron, John S. Owen, in 1883, and was incorporated in 1904. One of the most historical buildings remaining in our community is the Old Woodland Hotel on Main Street built by the Owen Lumber Company in the early 1900s. The historical Carriage House, along with the gymnasium, are being refurbished.

In Owen, one might enjoy a nature walk in the majestic forests along the Popple River, a picnic at the Owen Park watching the colorful ducks watching the sunset from the High Bridge or camp at Crowley Park. Owen offers a paved bike trail that leads to the village of Withee for the dedicated roller-bladers, bike riders and walkers. Winter offers fantastic ski and snowmobile trails and sledding down Tennis Shoe Hill. Hunters and



fisherman will benefit from the woodlands and many lakes and streams in the area. For the avid golfer, Owen boasts a beautiful nine-hole golf course to challenge your talents. Owen may be a small town in size, but offers large opportunities. This community also has a friendly atmosphere, where there are no strangers, only smiles and genuine concern for each other.

Owen welcomes visitors and new residents, come see what's going on in Owen!

The City of Owen is located on Highway 29 in the heart of central Wisconsin. We love our quality of life and there are so many outdoor things to do. Golfing, camping, fishing and much more!

Owen Clerk

833 W. 3rd Street, PO Box 67, Owen, WI 54460

(715) 229-2404

owenclerk@cityofowen.com, www.cityofowen.com



Businesses in Owen



Shopping

Country Hardware
Crispy.Co Candy & Fruit
Dollar General
Finishing Touches Upholstery
Martin Pike Office Supply
O-W Sports & Liquor Store
Red Daisy Girl
Martin's Fresh Market

Government

City Hall
Owen Library
Owen Community Center
O-W Police Department
Owen/Withee/Curtiss Fire Dept.

Greenhouses

Flower Farm Greenhouse
Fox Farms
Frenchtown Greenhouse
Trapper Creek Acres

Healthcare/Services/Dental

Aspirus Owen Clinic
Clark County Rehab & Living
Clark County VA Clinic
Living Well Mental Health Clinic
Owen Family Dental Center
Revive Chiropractic

Manufacturing/Sales/Services

AJ Hollander
Badger Precision Inc
Bogseth Bussing
D-7 Solutions LLC
Elbow River Marketing (Propane)
Grandpa Earls Pretzels
Hanson Masonry & Concrete
Hoover Silo
Kerry Ingredients
Maki Heating & Cooling
Master Package
Metal Wholesale
NorAm Cold Storage
Quality Roasting
River Country Co-Op

Pubs & Eateries

Cozy Corner Café
El' Pinal
Mauel's Ice Cream
Meadowview Golf Course/Restaurant
One Shot Bar & Grill
Skunky's Bar
The Woodland Tap Room

Education/Childcare

Wild Hearts Daycare
School District of Owen-Withee

Churches

Holy Rosary Catholic
St Katherine's Episcopal
United Church Of Christ

Convenience Stores/Auto

Creekside Convenience Store
Mueller Automotive
Napa Auto Parts

Finance/Bank/Law

Kim Nelson Tax Accountant
Mary Ellen Hughes Law
Prevail Bank
Socwell Schindler & Associates
Standke Financial Services
Wordan-Wachsmith Law

Salons

Jen's Hair Salon & Tanning
Kelly's Unique Hair

Additional Businesses

Cruise Planners
Dairyland Animal Clinic SC
Enterprise Sentinel & Rural News
H&A Towing and Recovery LLC
Lake & Land Rec (Trailers)
Masonic Lodge
Maurina-Schilling Funeral Homes
Straight line Investments
Sunset Motel

Clark County Economic Development & Tourism Bureau

301 N Main St, Loyal, WI 54446

715-255-9100,

info@clarkcountyedc.org, www.clarkcountywi.org

