

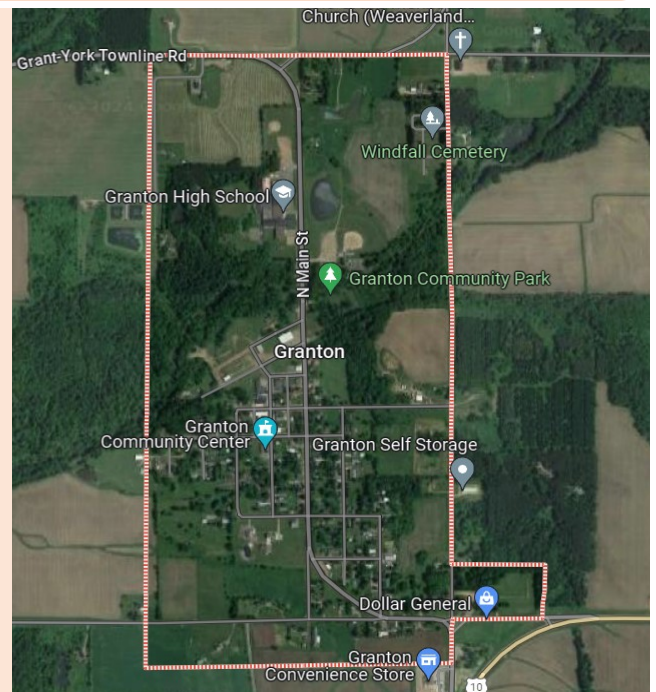


Granton, WI

One of Clark Counties little gems, that has everything you need and all the charms to make you fall in love and want to stay!

The Village of Granton rests among long stretches of rich farmland and is nestled along the banks of O'Neill Creek. This buzzing little community sits along U.S. Hwy 10 just west of Neillsville.

For a small town, Granton is one big place. Within the village limits, is a bank, Dollar General, hardware store, Lutheran Church, restaurant, pubs, post office, metal crafter, community center, vet clinic, K-12 school, ball park, tennis & volleyball courts, walking trails, campground with 14 electrical sites, fishing pond stocked each year with trout, library and a daycare center.



Just outside the Village limits find supper clubs, a gas station, several tractor and farm supply companies, cheese makers, and a large Amish community with many greenhouses and roadside stands.

Granton Clerk:

210 Maple Street Box 69, Granton, WI 54439

715-238-7339, Grantonclerk@tds.net





Granton Community Park

Businesses in the “Heart” of Granton

Find everything you need in walking distance in our Historic Downtown!

- Badger Animal Care
- Citizen State Bank
- Community Center
- Dollar General
- Fades and Foils Hair Studio
- Granton Community Library
- Granton Hardware
- Granton Area Fire Department
- Granton Municipal Office
- Granton Post Office
- Granton Village Hall & Garage
- Grassland Veterinary Clinic
- Mapleworks Café
- The Burrow Senior Living Center
- The Office Bar & Grill



Nearby Community Features:

- Bethany’s Shear Perfection Hair Salon/Tanning
- Campground with 14 electrical sites
- Frick Inn Bar & Grill
- Granton Community Child Care Center
- Granton Community Park & Fishing Pond
- Granton Convenience Store
- Granton K-12 School
- Granton Walking Trails
- Hilltop Bar & Grill
- Kuhl Implement
- LL Greenhouse
- Lynn Dairy & Lynn Dairy Proteins
- Mapleworks Apartments
- Roadhouse Bar & Grill
- Tennis & Volleyball Courts
- The Maple Dude
- Tractor Central
- Turn Pike Greenhouse
- Zion Evangelical Lutheran Church



Clark County Economic Development & Tourism Bureau

301 N Main St, Loyal, WI 54446

715-255-9100, nfo@clarkcountyedc.org, www.clarkcountywi.org

Granton has the friendly, compact living experience you’re looking for!