

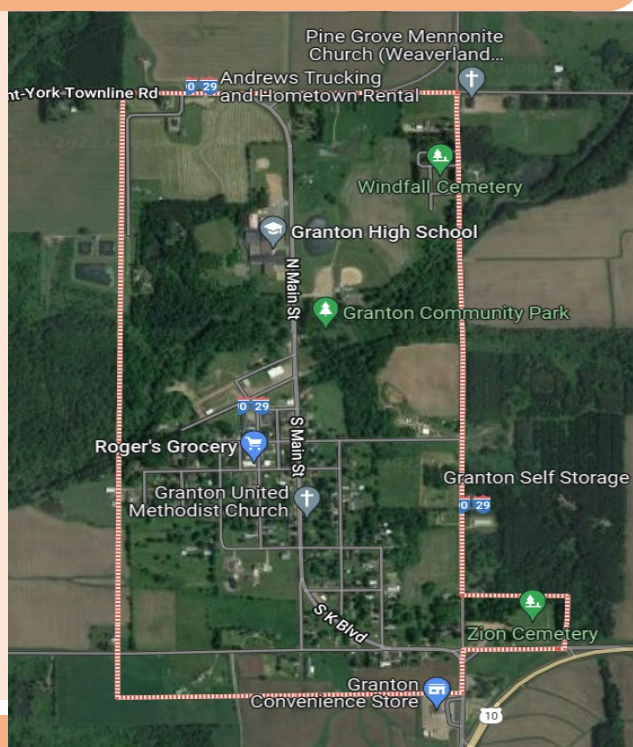
Granton, WI

"A Little Town Doing Big Things"

One of Clark Counties little gems, that has everything you need and all the charms to make you fall in love and want to stay!

The Village of Granton rests among long stretches of rich farmland and is nestled along the banks of O'Neill Creek. This buzzing little community sits along U.S. Hwy 10 just west of Neillsville.

For a small town, Granton is one big place. Within the village limits, is a bank, grocery store, hardware store, Methodist Church, Lutheran Church, restaurant, pubs, post office, metal crafter, community center, vet clinic, K-12 school, ball park, tennis & volleyball courts, walking trails, campground with 13 electrical sites, fishing pond stocked each year with trout, library and a daycare center.



Just outside the Village limits find supper clubs, a gas station, several tractor and farm supply companies, cheese makers, and a large Amish community with many greenhouses and roadside stands.

Granton Clerk:

210 Maple Street Box 69, Granton, WI 54439
715-238-7339, Grantonclerk@tds.net





Granton Community Park

Businesses in the “Heart” of Granton

Find everything you need in walking distance in our Historic Downtown!

Badger Animal Care
 Citizen State Bank
 Community Center
 Granton Community Library
 Granton Hardware
 Granton Area Fire Department
 Granton Municipal Office
 Granton Post Office
 Granton Village Hall & Garage
 Grassland Veterinary Clinic
 Hitch n Rail Bar & Grill
 Janeen’s Country Style
 Mapleworks Café
 Rogers Grocery
 The Burrow Senior Living Center



Granton has the friendly, “compact” living experience your looking for!

Nearby Community Features:

Campground with 13 electrical sites
 Granton Community Child Care Center
 Granton Community Park & Fishing Pond
 Granton Convenience Store
 Granton K-12 School
 Granton Walking Trails
 Lynn Dairy & Lynn Dairy Proteins
 Mapleworks Apartments
 Tennis & Volleyball Courts
 The Maple Dude
 United Methodist Church
 Zion Evangelical Lutheran Missouri Syn.



Clark County Economic Development & Tourism Bureau

301 N Main St, Loyal, WI 54446

715-255-9100, nfo@clarkcountyedc.org, www.clarkcountywi.org