

# *Village of* **CURTISS**



## **WISCONSIN**

**"Curtiss is a friendly small village, waiting to welcome you to our community."**

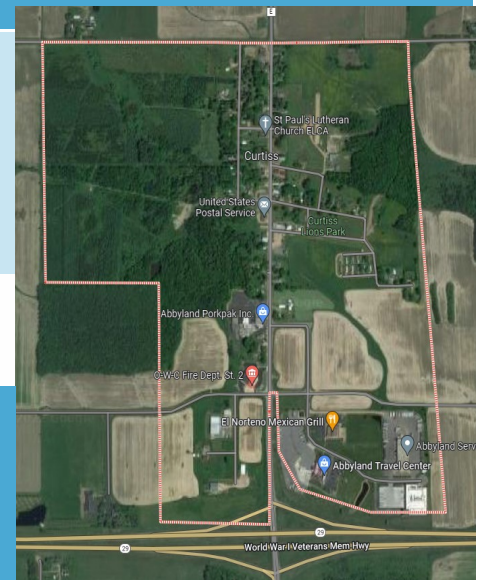
Curtiss is located on the Yellowstone Trail. Conveniently located half way between Wausau and Eau Claire along State Highway 29. The Village has a population of just a little over 300 residents. We may be small, but we have business, industry and much to offer in our area.

The Village of Curtiss has a village community center (formerly the Curtiss School, built in 1910), Curtiss Memorial Park and Village park which has a shelter with kitchen, modern facilities and a playground.



**There are many recreational opportunities within a short distance of Curtiss, in Clark, Taylor & Marathon Counties. Curtiss is also located right on some of Wisconsin's well groomed snowmobile trails, with easy access to hundreds of miles of trails.**

Curtiss is home to numerous small businesses as well as a large processing facility, Mexican restaurant & banquet hall and a large 24 hour truck stop & restaurant.



### **Curtiss Clerk:**

915 Meridian St, P.O. Box 95, Curtiss, WI

Ph: 715-223-6226

[curtissclerk@gmail.com](mailto:curtissclerk@gmail.com), [www.villageofcurtiss.org](http://www.villageofcurtiss.org)



## Businesses in Curtiss & Surrounding Area

### **Businesses in the heart of Curtiss:**

Abbyland Family Restaurant  
 Abbyland Porkpak Inc  
 Abbyland Service Center & Truck Wash  
 Abbyland Truck Stop/ C- Store  
 Boomtown Storage  
 Curtiss Alliance Church  
 El Nortenno Banquet Center  
 Exit 127 Storage  
 JBS Buying Station/ Northeast Cattle Co  
 Midwest Sidewalls, LLC  
 Real Fence LLC  
 St Paul's Lutheran Church- ELCA  
 Walnut Creek Foods  
 Walters Repair Service  
 Wisconsin's Drink, LLC

Curtiss has the friendly living experience your looking for!

### **Nearby Community Businesses:**

Brubaker Ag Equipment LLC  
 Bruce Mound Builders LLC  
 Cloverdale Country Store  
 Cloverdale Equipment LLC  
 Country Fresh Produce  
 Dales Quality Spray Painting & Whitewashing  
 Double L Greenhouse  
 Hoover Hydraulics  
 Hoover Metals  
 Maki Welding Services LLC  
 Nasonville Dairy Cheese Store  
 Oak Grove Custom Kitchen  
 Popple River Hydraulics  
 Rainbow Reflections Discount Groceries  
 Schindler Auctions  
 Sensenig Construction  
 Time Flies Bar & Grill  
 Valentine Garden & Greenhouses  
 Zimtech Directional Boring



**Clark County Economic Development & Tourism Bureau**

301 N Main St., P.O. Box 236, Loyal, WI 54446

715-255-9100, [info@clarkcountyedc.org](mailto:info@clarkcountyedc.org), [www.clarkcountywi.org](http://www.clarkcountywi.org)