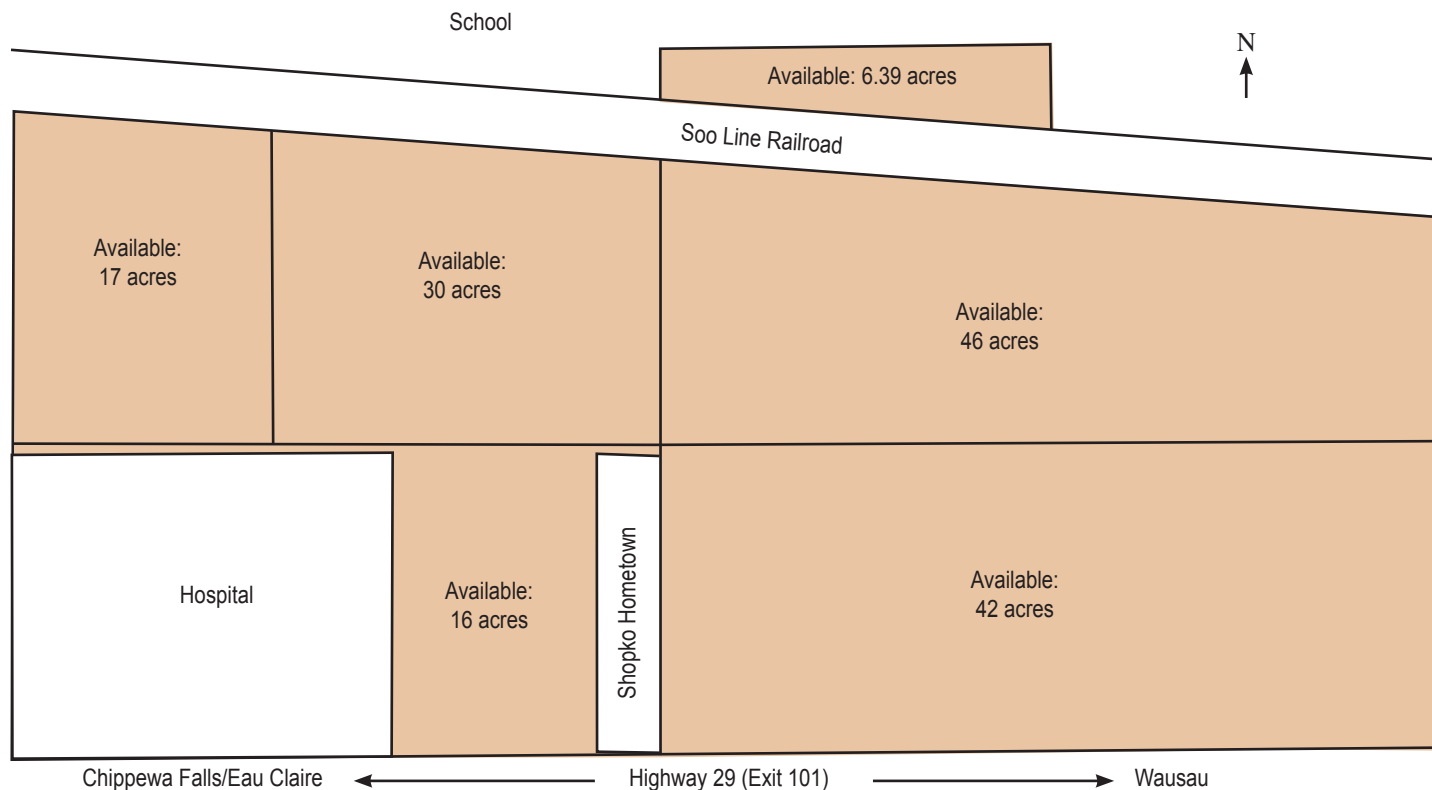


# Stanley, WI -- Business/Industrial Park



## Site Specifications

### SITE INFORMATION

Available Acres	151
Zoning	Urban/ Transitional

### TRANSPORTATION

Nearest major highway	WI State Hwy 29 (Expressway)
Distance to nearest highway	Adjacent
Lanes	4
Nearest comm. airport	Eau Claire
Distance to airport	30 miles
Rail provider	Canadian National
Rail siding	Adjacent

### UTILITIES

Electricity supplier	Clark Electric Cooperative
3-phase electric	Yes
Gas supplier	WE Energies
Municipal water	Yes
Municipal sewer	Yes
Stormwater	Yes

### TELECOMMUNICATIONS

Fiber optics	Yes
Telephone	CenturyLink

### MEDICAL

Ministry Health Care--	
Our Lady of Victory Hospital	0 mi
Victory Medical Center	0 mi

### INCENTIVES

Multiple Local, State, and Federal funding opportunities
Regional Business Fund
WI Financing & Tax
Credit Programs
WHEDA/USDA/WBD
TIF
Labor training & others

### BUSINESS/INDUSTRIAL PARKS

Second park located west of city, 200 acres
Zoned heavy industrial

### MAJOR EMPLOYERS

MAJOR EMPLOYERS	NO. OF EMPLOYEES
Stanley Correctional Facility	380
School District of Stanley-Boy	160
Our Lady of Victory Hospital	152
Film Tech	49
Ace Ethanol	40
Archer Daniel Midland (ADM)	20
Stanley Case Works	16

### TERMS

Land sales based on company investment and job creation

Municipal ownership

### CONTACTS

Sheila M. Nyberg  
Executive Director  
Clark County Economic  
Development Corporation  
301 N. Main St.  
P.O. Box 236  
Loyal, WI 54446  
Phone: 715-255-9151  
Fax: 715-255-9153  
sheila@clarkcountyedc.org  
www.clarkcountywi.org

City Clerk  
353 S. Broadway St.  
P.O. Box 155  
Stanley, WI 54768  
Phone: 715-644-5758  
Fax: 715-644-5705  
clerk@stanleywisconsin.us  
www.stanleywisconsin.us

# Stanley -- live, work, & play well!



**BROADWAY HOME DECOR AND FLORAL**



**ACE ETHANOL**



**CHAPMAN PARK**



**SHOPKO HOMETOWN**

**City of Stanley**  
353 S. Broadway St.  
P.O. Box 155  
Stanley, WI 54768  
715-644-5758  
[www.stanleywisconsin.us](http://www.stanleywisconsin.us)



**MINISTRY OLV HOSPITAL**

“The Best of Times Start in Stanley”. Strategically located halfway between Green Bay and Minneapolis/St. Paul, along Highway 29 in west central Wisconsin, Stanley is a warm-hearted community of 3,378 and straddles Chippewa and Clark counties. It offers a fine balance of businesses, products, services, housing, good schools, and varied recreational opportunities.

Stanley visitors can access conveniently-located motels and choose from a number of restaurants and specialty food and beverage options. It has one of the few remaining historic movie theaters in the country, as well as shopping, professional and financial services in a safe, walkable downtown.

Otter Lake recreation area is seven miles north of Stanley, and is just one of the areas offering fishing and hunting opportunities and recreational trails. The 10,500 sq. ft. Stanley Area Historical Society Museum draws visitors from near and far, and the community has a pool and fitness center at the high school.

[www.Partner29.com/Stanley](http://www.Partner29.com/Stanley)

## Travel Time to Stanley, WI

To and from Stanley	Miles
Eau Claire, WI	35
Wausau, WI	66
Minneapolis/St. Paul, MN	120
Madison, WI	178
Green Bay, WI	159
Milwaukee, WI	250
Chicago, IL	319

