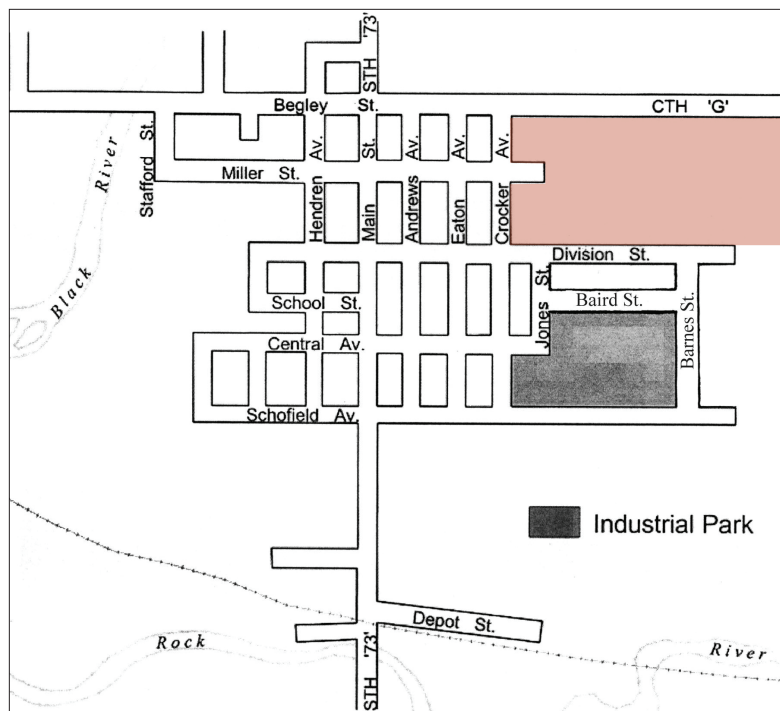
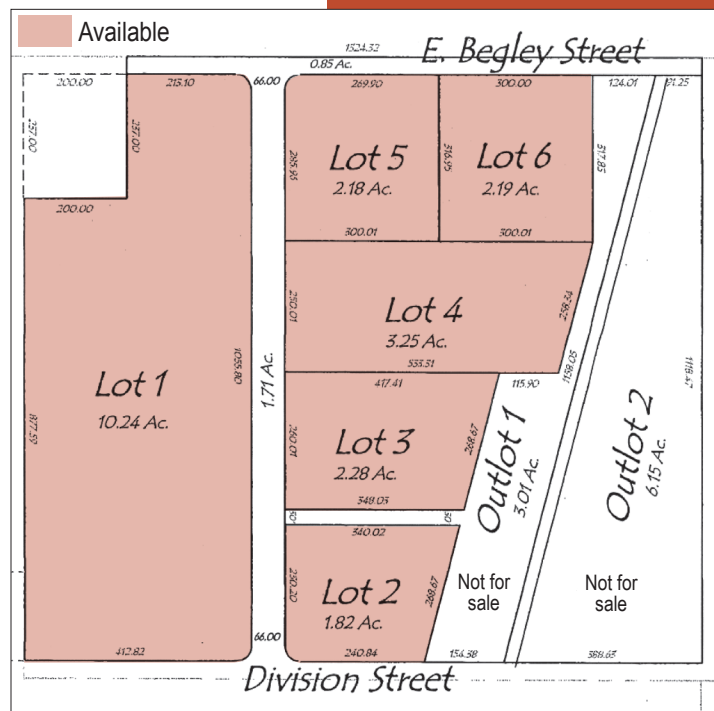


Greenwood, WI -- Industrial Parks



BAIRD INDUSTRIAL PARK



NEW WAY INDUSTRIAL PARK

Site Specifications

SITE INFORMATION

Available Acres	Baird - 3 New Way - 21.94
Zoning	Industrial

TRANSPORTATION

Nearest major highway	State Hwy 73
Distance to nearest highway	Adjacent
Lanes	2
Nearest comm. airport	Mosinee / Eau Claire
Distance to airport	49 miles / 43 miles
Runways – over 1700'	Within 15 minutes
Rail provider	None

UTILITIES

Electricity supplier	Xcel Energy
Gas supplier	WE Energies
Municipal water	Yes
Municipal sewer	Yes
Stormwater	Yes

TELECOMMUNICATIONS

Fiber optics	Yes
--------------	-----

MEDICAL

Medical	Yes
- Marshfield Satellite Clinic	0 mi
- Memorial Medical Satellite Clinic	0 mi
- Memorial Medical Center	16 mi
- Marshfield Medical Center	25 mi
- National Farm Medicine Center	25 mi
- Ministry Health Care–Saint Joseph's Hospital	25 mi
- Marshfield Clinic Research Foundation	25 mi
- Aspirus Wausau Hospital	60 mi
- St. Clare's Hospital	60 mi

INCENTIVES

Multiple Local, State, and Federal funding opportunities
 NMTC Qualified
 Regional Business Fund
 WI Financing & Tax
 Credit Programs
 WHEDA/USDA/WBD
 Focus on Energy
 TIF
 Labor training & others

TERMS

Negotiable
 Land sales based on company investment and
 job creation

SITE DESCRIPTION

The City of Greenwood is ideally situated on the banks of the Black River in the heart of Clark County. It has three industrial parks - Baird Street Industrial Park and New Way Community Park located in the city and the CECO (Clark Electric Coop) Industrial Park located on the west side of the city. Greenwood takes pride in their progressive focus into the future while maintaining a less complicated lifestyle of the past.

CONTACT

Sheila M. Nyberg
 Executive Director
 Clark County Economic
 Development Corporation
 301 N. Main St.
 P.O. Box 236
 Loyal, WI 54446
 Phone: 715-255-9151
 Fax: 715-255-9153
 sheila@clarkcountyedc.org
 www.clarkcountywi.org

James Schecklman
 Mayor of Greenwood
 P.O. Box D
 102 N. Main Street
 Greenwood, WI 54437
 Phone: 715-267-6205
 Fax: 715-267-7605
 mayor@greenwoodwi.com



Greenwood, *welcome home!*

City of Greenwood
P.O. Box D
102 N. Main Street
Greenwood, WI 54437
Phone: 715-267-6205
Fax: 715-267-7605
www.greenwoodwi.com

Greenwood, originating from the combination of two previous names, Greenland and Land of the Big Woods, was incorporated in 1891. At the center of Clark County, it boasts a thriving agricultural industry evident by the prosperous farms and milk processing plants, including Grassland Dairy, one of the largest butter plants in the United States. Summer events include a 38-mile bicycle race held in July, Concerts in the Park every Wednesday in July, Easter Egg Hunt, numerous softball tournaments, large

fireworks display, End of Summerfest held the first weekend after Labor Day, Stampede Run/Walk, music, car show, antique tractor pull, inflatables, crafters, and much more. Enjoy the Christmas Tour of Homes held the second Saturday in December every other year. The tour will again be held in 2018, and don't forget to visit Santa on the second Saturday in December. Visit Branstiter Main Streets of Greenwood Museum, which houses over 400 items. Call City Hall at 715-267-6205 for a tour.

www.greenwoodwi.com

Travel Time to Greenwood, WI

To and from Greenwood	Miles
Eau Claire, WI	51
Wausau, WI	60
Minneapolis/St. Paul, MN	148
Madison, WI	173
Green Bay, WI	153
Milwaukee, WI	219
Chicago, IL	304

